

BOX SEAL



APLICAȚII

- Transport documente • Transport valori
- Posta si curierat

MATERIAL

- Polipropilena

CARACTERISTICI

- Autoblocant • Desigilare prin taiere/ rupere

MARCAJE

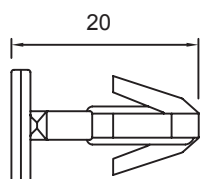
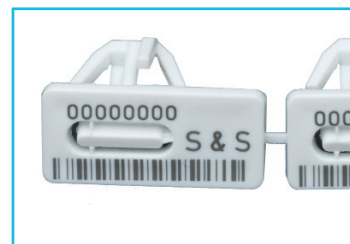
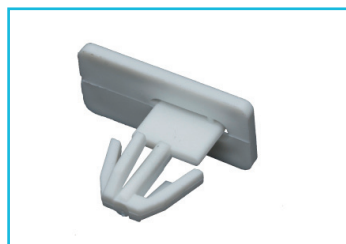
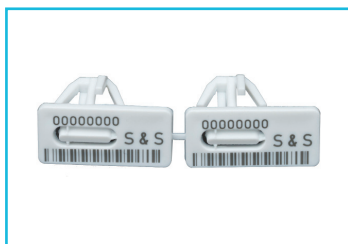
- Logo • Text • Serie • Cod de bare

CULORI

- Alb • Alte culori la cerere

AMBALARE

- 500 bucati/cutie



POLISHED
(POLISH SURFACE)
FPONT SIDE

